

Children In History

Model Sheets

Coach and Horses

(A nineteenth century Australian stage coach)

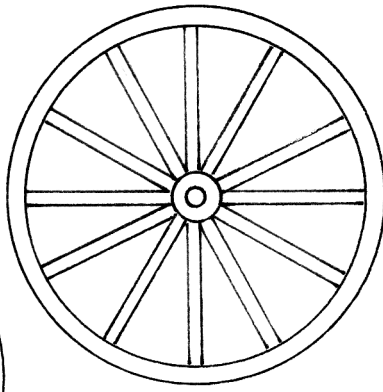
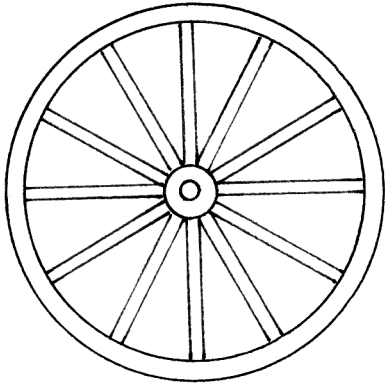
What you will need:

thin cardboard (large cereal packets are ideal)
skewers and straws
scissors
sharp blade (or craft knife)...adult supervision required!
glue stick and PVA glue
coloured textas or pencils
paper clips, pegs, rubber bands (for clamping and holding pieces together)

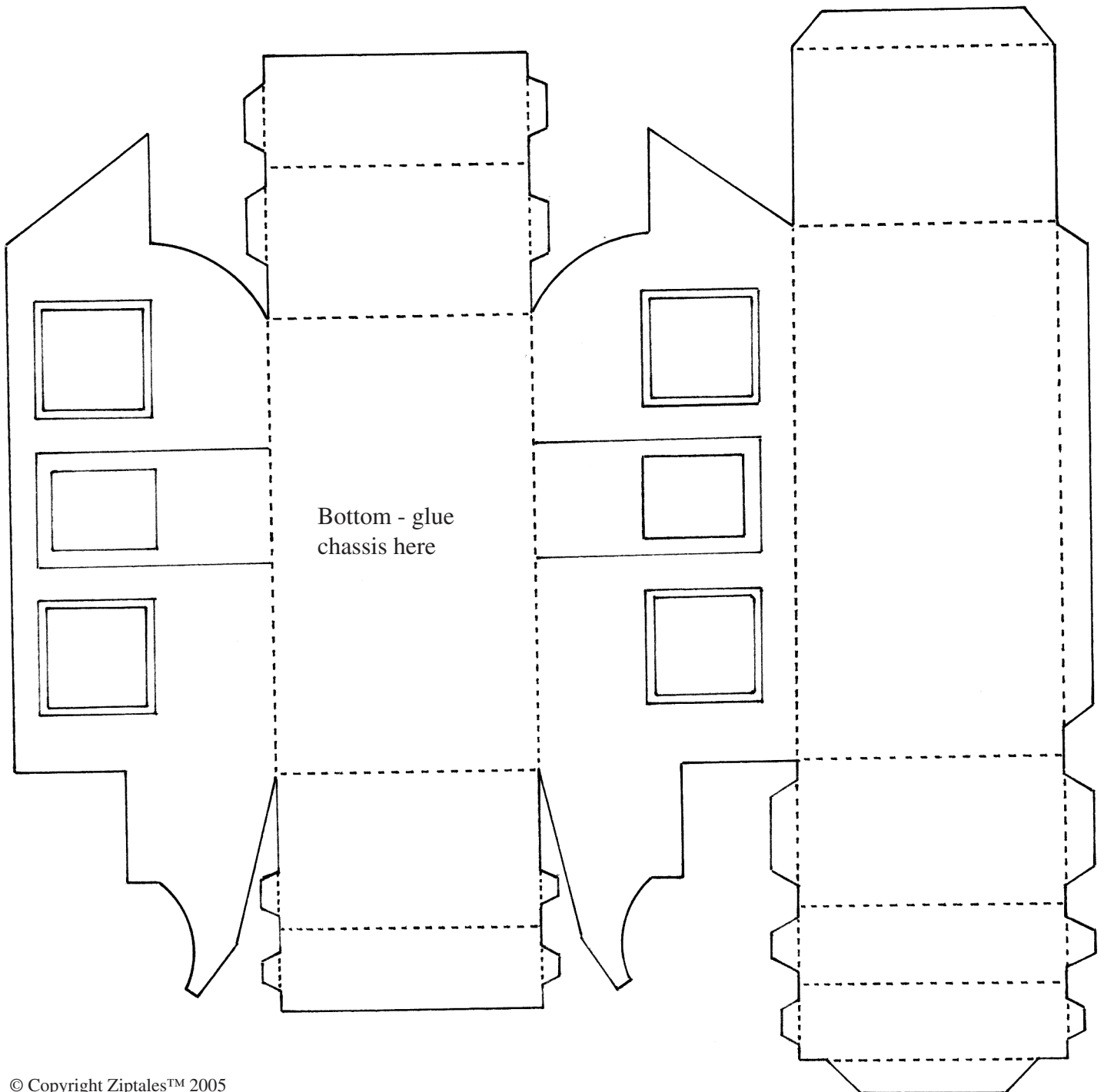
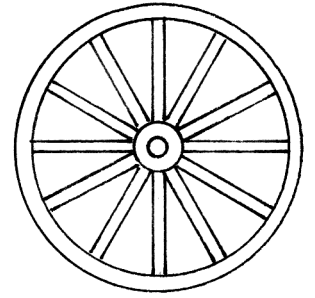
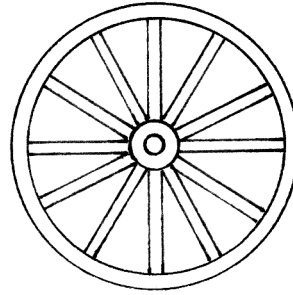
How to make the 'Coach and Horses':

1. Take the 'plans' of the coach and horses (already photocopied) and glue them to sheets of cardboard, using a glue stick.
2. When dry, cut out the shapes very carefully with a pair of scissors or a blade (adult supervision required for a blade).
3. Colour the parts before assembling them, as shown in the model. Use textas or pencils, because paint will tend to crinkle the paper and cause it to lift from the cardboard.
4. Gently score (produce a *shallow* groove) along the dotted lines with a blade. Fold along the dotted lines.
5. Glue the chassis beneath the coach body.
6. Punch holes in the chassis for axles (straws) and through the wheels (skewers). Insert the straws through the holes and cut.
7. Insert the skewers through the straws, and cut to size. Glue the wheels to the tips of the skewers.
8. Attach a straw or skewer to the underside of the coach so that it sticks out *in front*.
9. Cut and attach a small strip of card across this, with the ends bent down.
10. Glue both sides of the horses together, and attach to each side of this shaft (9).

Use the larger wheels at the back



Use the smaller wheels at the front



Bottom - glue chassis here

